

Installation instructions lift-kit on Grouphutch in combination with Van Spijker Sliding fence



Installation instructions lift-kit on Grouphutch in combination with Van Spijker Sliding fence

Step 1/4

ATTENTION!

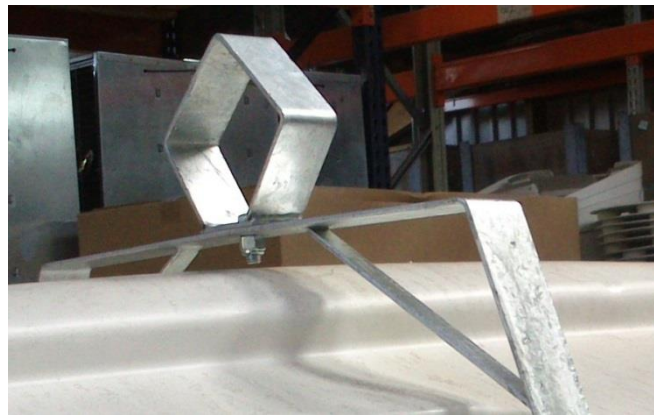
The location of the lift-kit on a grouphutch with sliding fence is different from the Standard location.

Because of the balance when lifting the hutch with fence, the lifkit is mounted closer to the frontend of the roof.



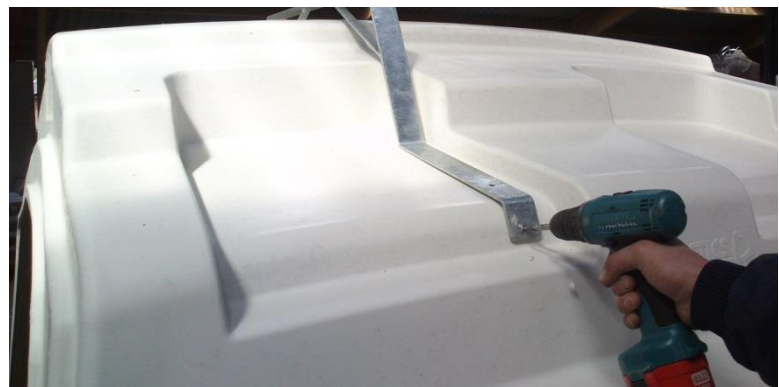
Step 2/4

Mount the ring on the bracket with the bolt as shown.



Step 3/4

Mark the location and drill the holes with a 10mm drill.



Installation instructions lift-kit on Grouphutch in combination with Van Spijker Sliding fence

Schritt 4/4

Place the counter plate to the roof and mount the bracket with the locking bolts (M10x30) from the inside with selflocking nuts on the outside.

